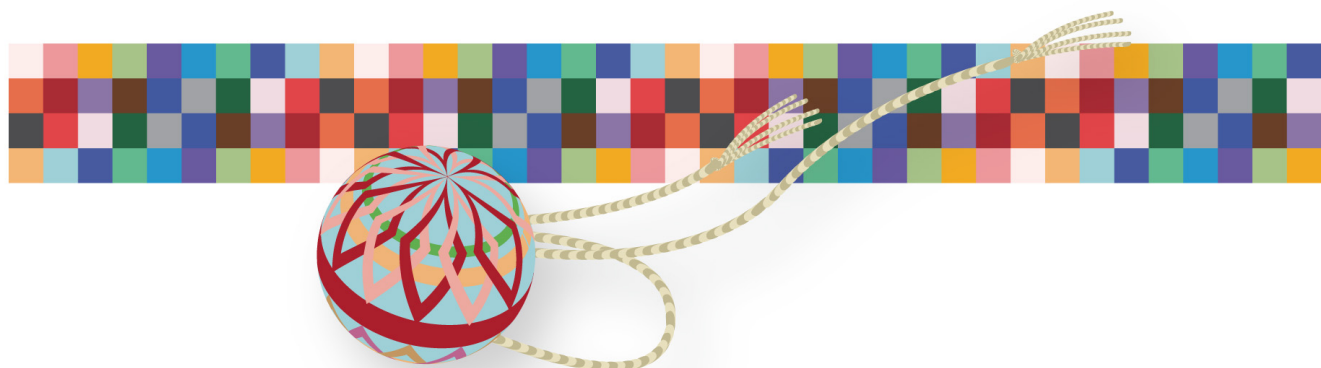




WU International



WAKAYAMA
UNIVERSITY

— since 1949 —



<https://www.wakayama-u.ac.jp>



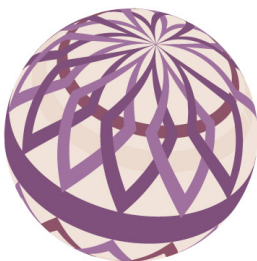
Wakayama University

At Wakayama University (WU), we are dedicated to the continuous development of intercultural diversity and inclusion. We actively recruit international students from a wide range of racial, cultural, and linguistic backgrounds to create a diverse campus community characterized by energetic interactions and conversations between domestic and international students. We appreciate a variety of perspectives and beliefs, which have the potential to spark dialogue on diversity and inclusion, and to advance international collaboration in educational and scientific fields.



和歌山大学

和歌山大学は、異文化における多様性を受け入れ、その多様性を認め合うことの価値創造に取り組んでいます。多くの国からさまざまな民族、文化、言語的背景を持つ留学生を積極的に受け入れ、日本人学生と留学生の活発な交流や会話が飛び交うキャンパスコミュニティを創造します。和歌山大学は、多様な視点を持った考え方や信念を尊重し、多様性に基づいた対話を活性化し、教育・研究分野における国際協力を推進します。



WAKAYAMA
UNIVERSITY

since 1949



WU CoNNECT

(Collaborative Nihongo and Nippon Studies
and Education for Connecting Together)



The intent of WU CoNNECT is to create an international community with an in-depth understanding and appreciation of different cultures and values. Students are connected across borders and nationalities through Japanology studies, and through unique on and off campus international experiences. These experiences help to equip students with the necessary intercultural sensitivity and international engagement knowledge and skills to become global citizens.

Wakayama University is dedicated to helping students experience the world and establish a solid foundation as true international communicators.



WU CoNNECT

(日本学で世界とつながる)

WU CoNNECTは、異なる文化や価値観への深い理解を備えた国際的なコミュニティーを創り出すことを目的としています。日本学を軸とした学内外でのユニークな国際経験を通じて、学生たちは国境や国籍を越えて世界と結びつきます。これらの経験を通じ、国際人となるために必要な感性や、国際的関与への知識とスキルを備えることができます。

和歌山大学は、学生たちが「世界」を経験し、真の国際的コミュニケーターとして、確固たる基礎を築き上げることに貢献します。



Outgoing

Student Mobility

Student Outcome:

Develop expertise in intercultural communication through an in-depth understanding of Japan and Japanese culture

日本文化理解を通して異文化理解のエキスパートに

WU CoNECT Objectives 目的

Involve students in Japanology studies courses, taught by experts in the field

日本語での国際交流でより多くの学生の国際化を図る

Involve students in high quality international experience programs, on and off campus

質の高い国際派遣プログラムの構築

Assist students to cultivate cultural awareness and international communication skills

本質的な国際展開力を持った学生の育成

Activities and Experiences 活動内容

Students have the opportunity to participate in the following activities and events:



Student Exchange Program

学生交換留学プログラム

Short-Term Studying Abroad

短期海外派遣プログラム

Overseas Experiential Learning Seminars

短期海外研修プログラム

Ennichi - Festival

日本風の縁日

Japanese Language Teaching Internship

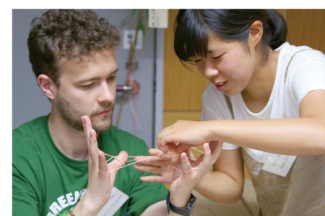
日本語講師インターンシップ

Tour Guide Assistance to Foreign Visitors at Mt. Koya

外国人向けの高野山ガイドのお手伝い

International Engagement Events at Local Schools

地元小中高での交流授業で自国紹介等



Incoming

Student Mobility

Student Outcome:

Work as a cultural ambassador all around the world with Japanese

日本語で世界のアンバサダーに

WU CoNNECT Objectives 目的

Involve students in Japanology studies courses, taught by experts in the field of “Japanology Studies” programs

日本体験「日本学」プログラムの提供

Develop student appreciation of Japan and its culture

日本の良き理解者を増やす

Assist students to become cultural liaisons between Japan and the rest of the world

日本語で世界各国を繋ぐアンバサダーの育成



Activities and Experiences 活動内容

Students have the opportunity to participate in the following activities and events:

Welcome Party

新入留学生歓迎交流会

Speech Contest

スピーチコンテスト

Essay Contest

作文コンクール

Japan Cultural Study Trip

日本文化体験研修旅行

Language Exchange Cafe

多言語サロン

Wakamatsuri Festival

和歌祭への参加



Internship Programs

インターンシップ

Short-term Study Abroad Program

短期交流学生プログラム

Japanese Studies Students Programs (MEXT Scholarship)

日本語・日本文化研修留学生プログラム(国費)

Student Research Program (MEXT Scholarship)

研究留学生プログラム(国費)

Mongolia Twinning Program

モンゴルツイニングプログラム

Hanoi Twinning Program

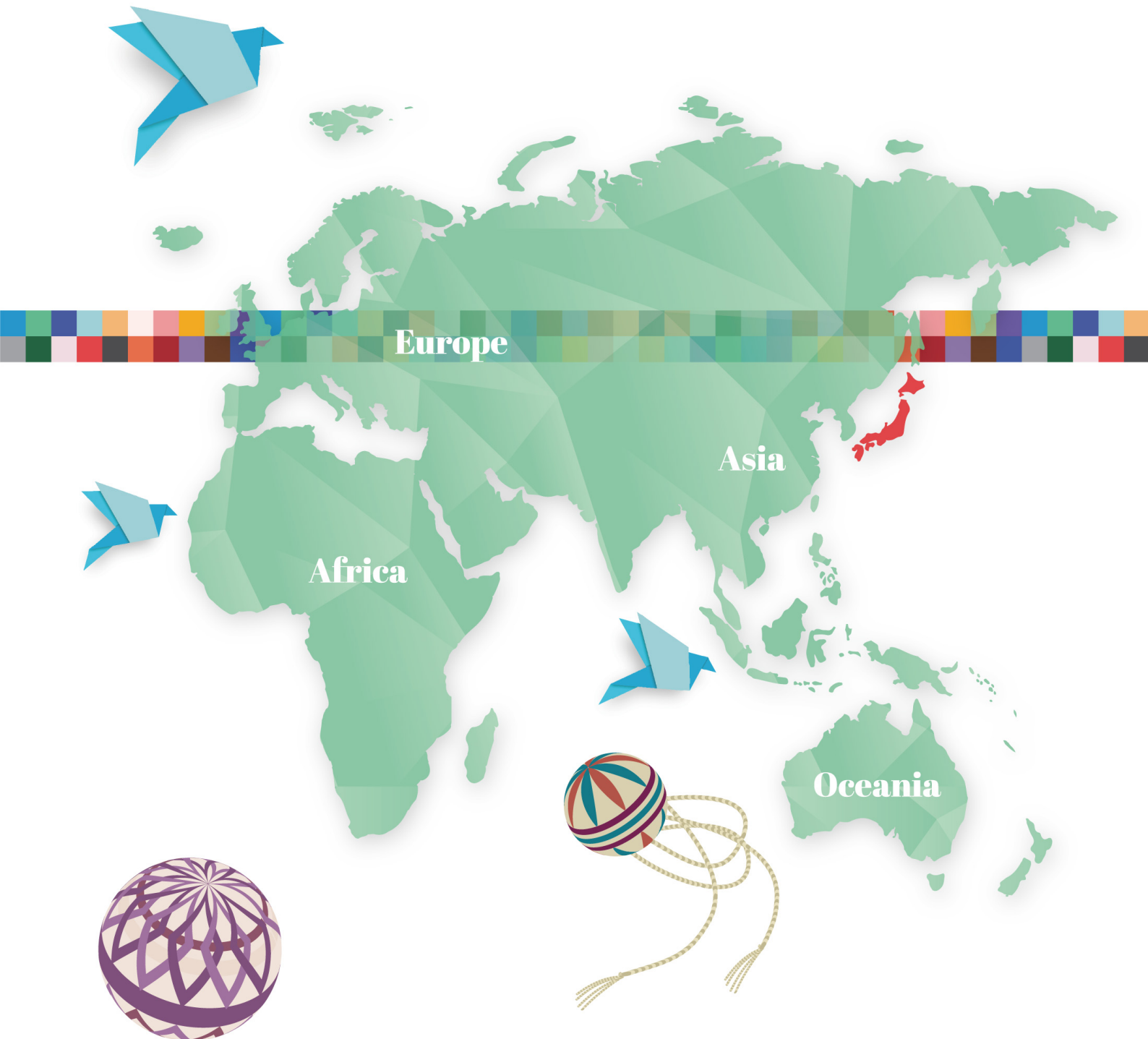
ハノイツイニングプログラム

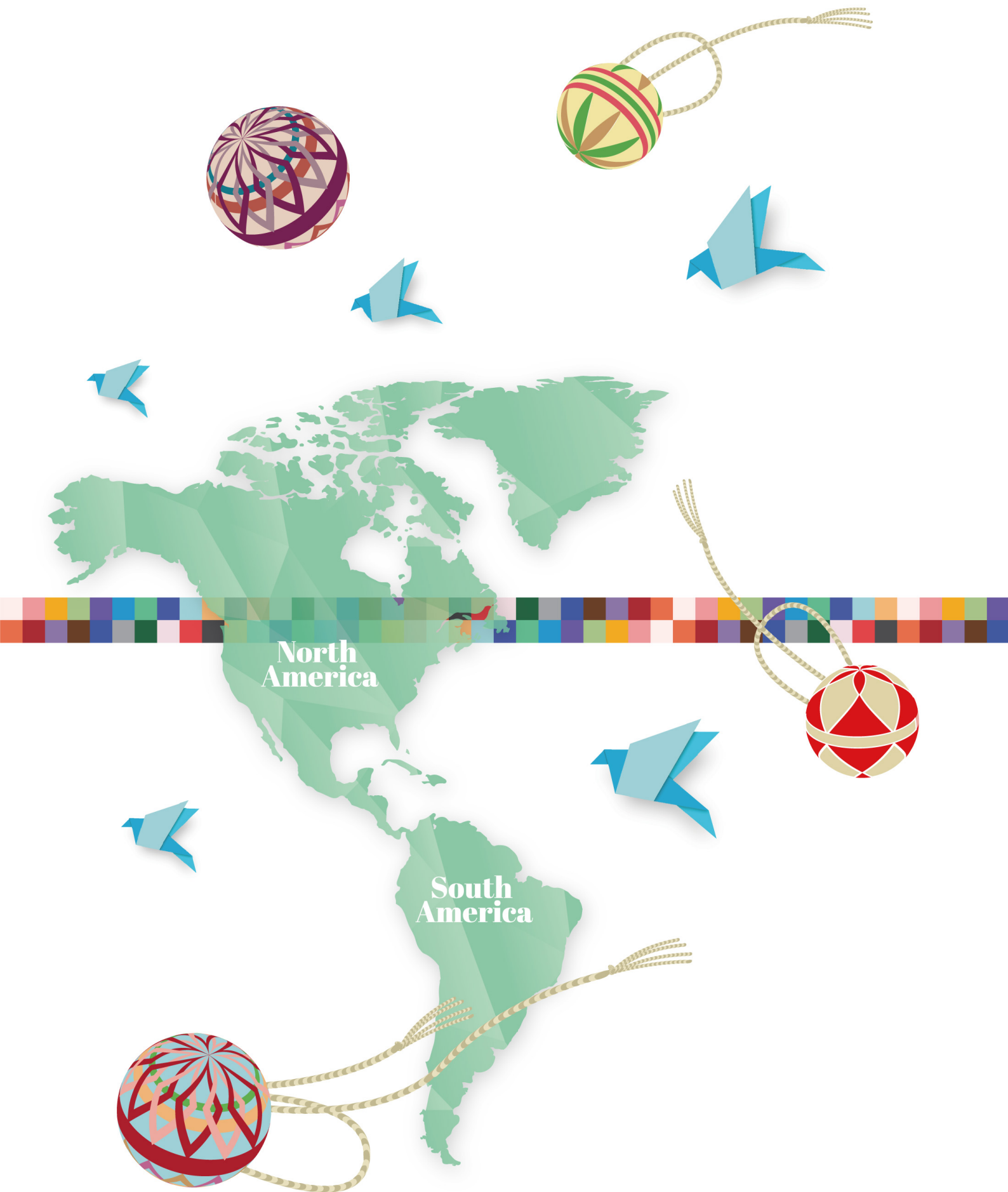


WU CoNNECT



日本学でつながる





Academic Calendar




Spring | Summer | Autumn | Winter

March	● Spring Break Ends
April	● Entrance Ceremony ● Orientation Week
May	● Welcome Party
July	● Japanese Essay Contest
August	● Summer Break Begins

September	● Summer Break Ends
October	● Orientation Week ● Welcome Party
November	● University Festival ● One Day Study Tour
December	● Japanese Speech Contest ● Winter Break Begins
January	● Winter Break Ends
February	● Spring Break Begins

General Information

Climate

 Spring	Mar-May	9°C-19°C
 Summer	June-Aug	22°C-35°C
 Autumn	Sep-Nov	13°C-24°C
 Winter	Dec-Feb	5°C-10°C

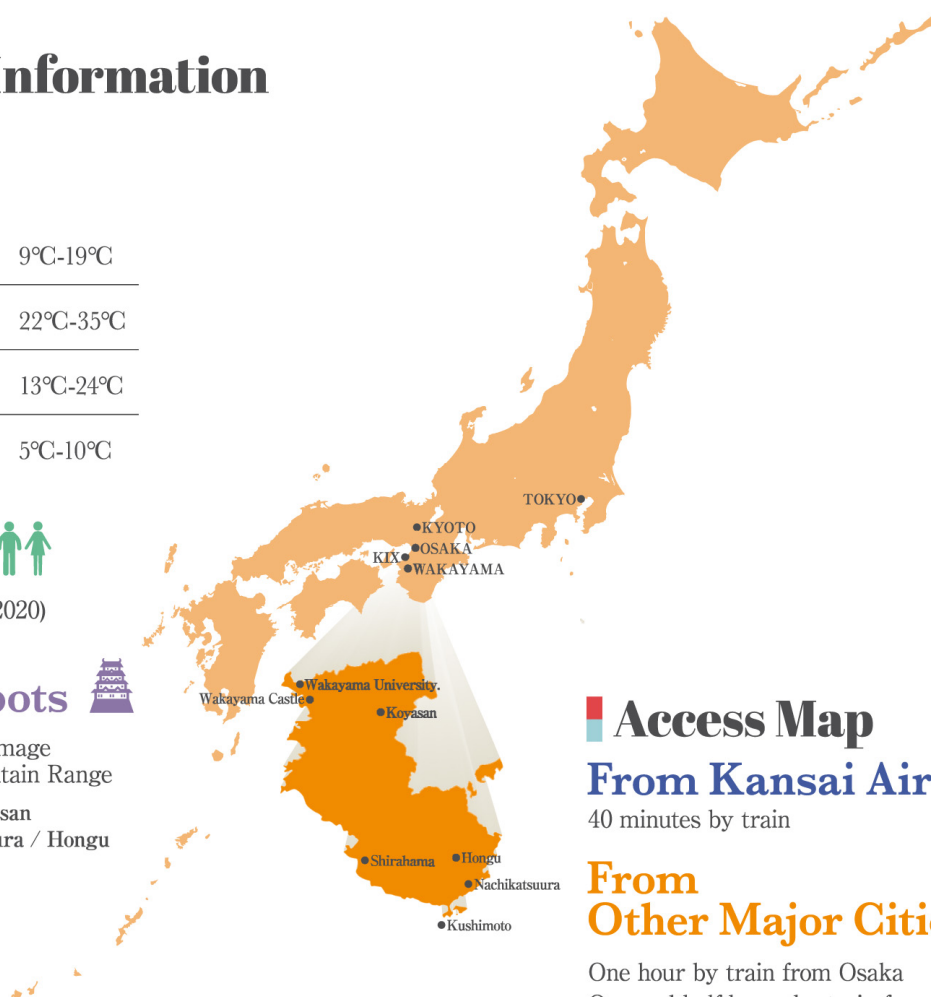
Population

917,252 (As of April 1, 2020)

Touristic Spots

Sacred Sites and Pilgrimage
Routes in the Kii Mountain Range

Wakayama Castle / Koyasan
Shirahama / Nachikatsuura / Hongu
Kushimoto



Access Map

From Kansai Airport 
40 minutes by train

From Other Major Cities 





One hour by train from Osaka
One and half hours by train from Kyoto
Two hours by air from Tokyo

Traditional Colors of Japan 日本の四季を彩る伝統色






Spring Color / 春の色

	桜色 (さくらいろ)
	紅梅色 (こうばいいろ)
	山吹色 (やまぶきいろ)
	若葉色 (わかばいろ)
	菫色 (すみれいろ)

Summer Color / 夏の色

	露草色 (つゆくさいろ)
	若竹色 (わかたけいろ)
	杜若色 (かきつばたいろ)
	薄浅葱 (うすあさぎいろ)
	萱草色 (かんぞういろ)

Autumn Color / 秋の色

	柿色 (かきいろ)
	茜色 (あかねいろ)
	竜胆色 (りんどういろ)
	栗皮色 (くりかわいろ)
	群青色 (ぐんじょういろ)

Winter Color / 冬の色

	銀鼠 (ぎんねず)
	千歳緑 (せんざいみどり)
	白梅色 (しらうめいろ)
	朱色 (しゅいろ)
	消炭色 (けしすみいろ)

WU CONNECT



日本学でつながる

